

Cypress Hill Estate

Dakibiyu, Abuja



Peak & Hills

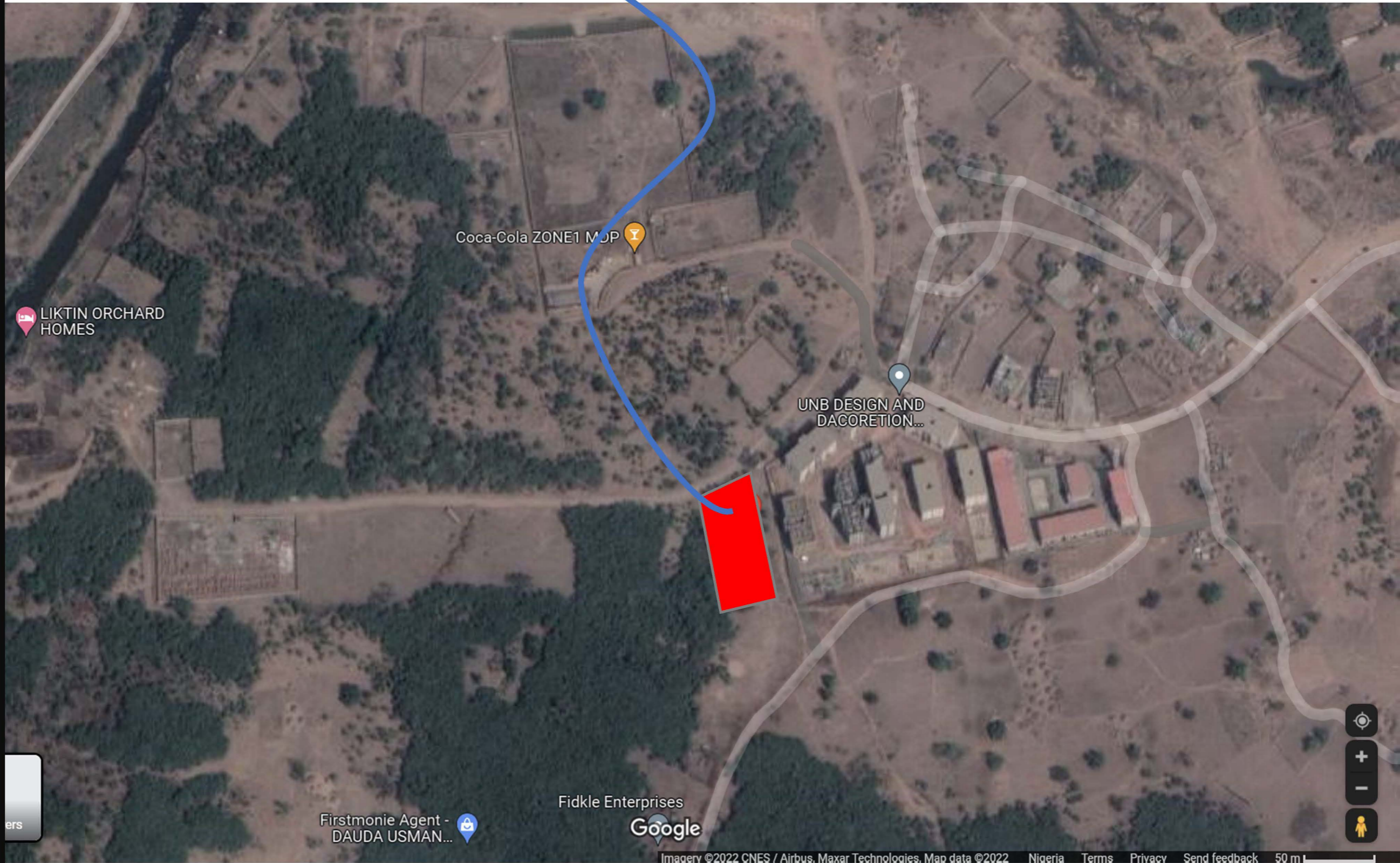
ENGINEERING • DEVELOPMENT • REAL ESTATE

client focused, results driven ...

Location

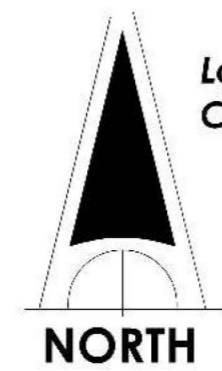
Located in the prime location that is Dakibiyu District which is a 5 minutes drive from Wuye District and a 10 minutes drive from Jabi. Our estate is located strategically in order to enable easy access to other parts of Abuja.

Cypress Hill



Site Plan

Polyathia Longifolia
(Masquerade Tree)



Lawn (Grass Carpet)

Polyathia Longifolia
(Masquerade Tree)

SITE ANALYSIS

TOTAL SITE AREA **4828.499sqm**
 TOTAL BUILT AREA **1857.677sqm**
 TOTAL NO. of PARKING **46 cars**
 TOTAL NO. OF FAMILIES **23 Families**
 PERCENTAGE BUILT AREA **38.47%**

VEGETATION

-  Polyathia Longifolia
(Masquerade Tree)
5 Nos.
-  Phoenix Canariensis
8 Nos.
-  Aloe Vera
101 Nos.

Bituminous Felt
(Road)

Phoenix
Canariensis

Phoenix
Canariensis



Features

- **High Quality Security Lights and CCTV surveillance.**
- **Paved roads and covered drains.**
- **Fully Independent Water Supply**
- **Generator**
- **Twenty Four Hours Uniform Security personnel**
- **Ample Parking Spaces**

Welcome Home

Home is where love resides,
memories are created, friends
always belong, and laughter
never ends.



Fit for your family

Scrupulously-made. Technologically innovative. Exceptional. 3 attributes that we stand by in order to create a perfect fit for your family.



The Denali

FIVE BEDROOM TERRACES

The Denali is a luxury five bedroom terrace duplex fully designed to not only accommodate your family's needs but to also respond to their changing needs.

features

- 4 bedrooms all en-suite
- 2 living rooms
- Maid's room



The Denali



The Denali



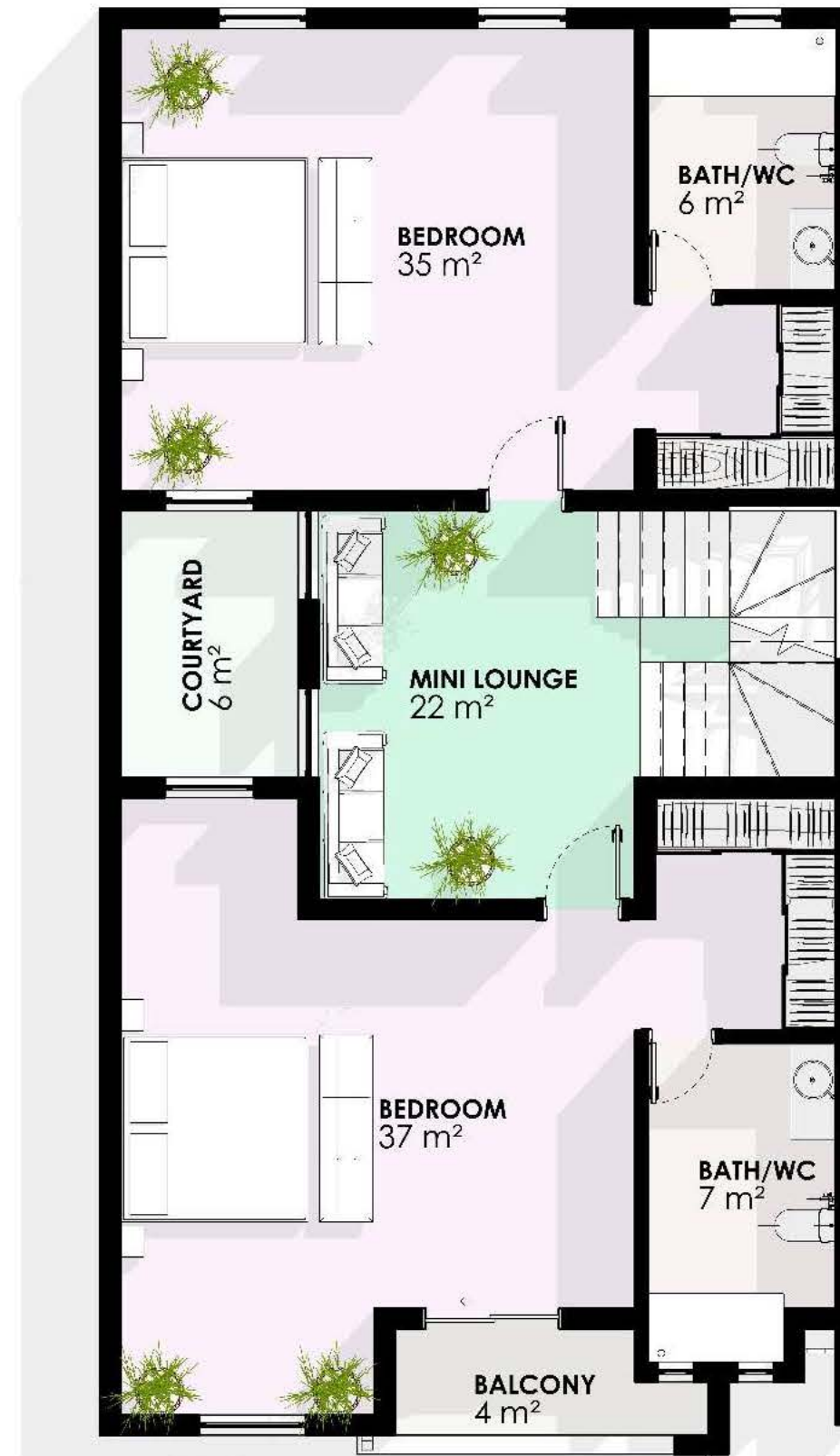
The Denali



Floor Plans



Ground Floor Plan



First Floor Plan



Second Floor Plan



Designed to please

The design of The Cypress Hill not only shows where we come from and where our pedigrees are, but it also shows the course of our thinking and how we see the future – as a perfect congruence of traditional values, technology and family comforts.

Interior Views



Interior Views



Interior Views



Interior Views



Interior Views



Contact Us



07063126500 09096666062



Peak&HillsNigeria



Peak&HillsNigeria



Info@peakandhillsnigeria.com

Disclaimer

All images, artists' renderings, representations and interior decorations, finishes, appliances and furnishings are provided for illustrative purposes only and have been compiled from sources deemed reliable. Though information is believed to be correct, it is presented subject to errors, omissions, changes and withdrawal without notice. This does not constitute or form any part of a contract of sale. Please contact our Sales Advisors for details.