



*The Himalayas*

Dakibiyu, Abuja

# Peak & Hills

ENGINEERING • DEVELOPMENT • REAL ESTATE

*client focused, results driven ...*



# Location

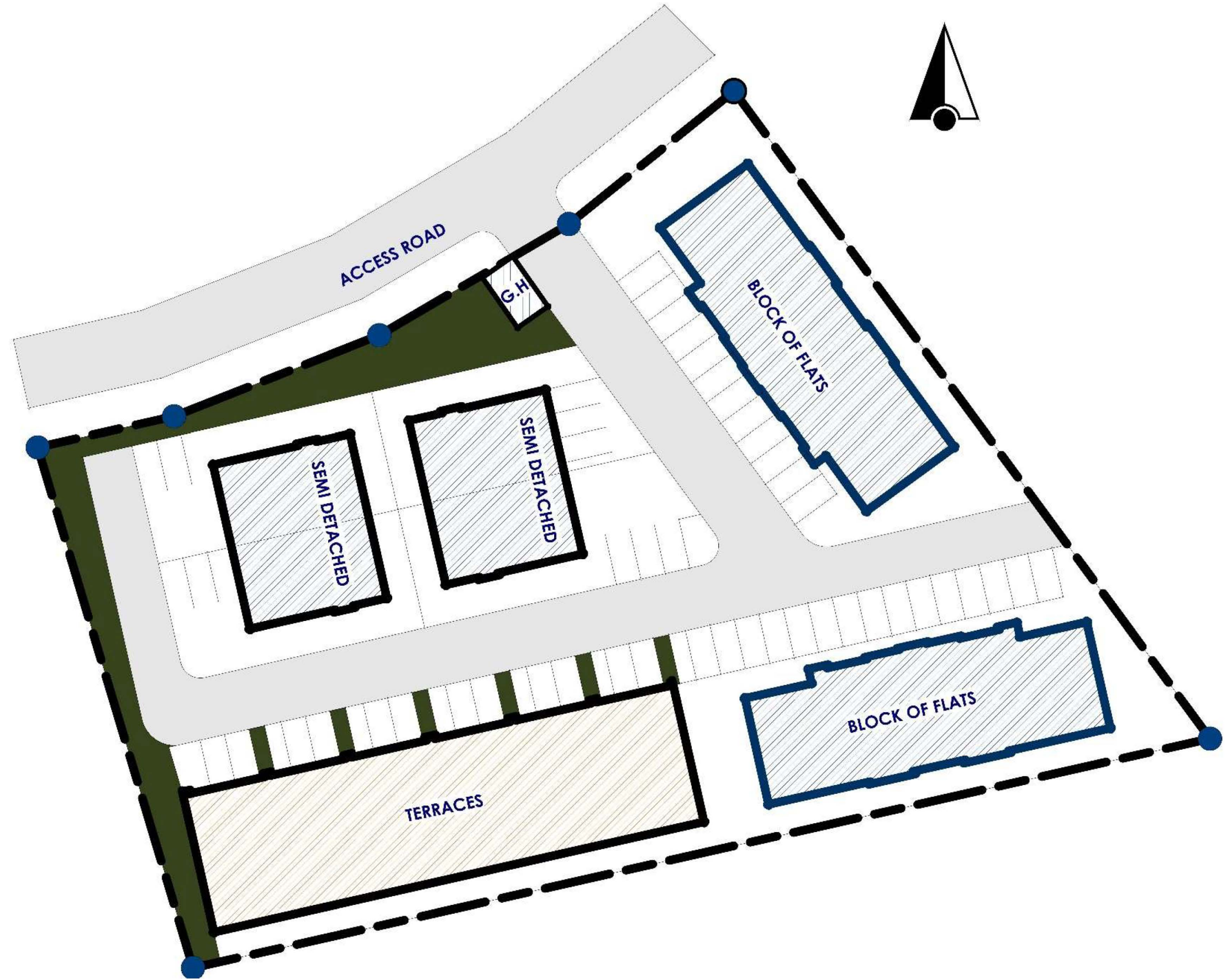
Located in the prime location that is Dakibiyu District which is a 5 minutes drive from Wuye District and a 10 minutes drive from Jabi. Our estate is located strategically in order to enable easy access to other parts of Abuja.

## The Himalayas





# Site Plan







## Features

- **High Quality Security Lights and CCTV surveillance.**
- **Paved roads and covered drains.**
- **Fully Independent Water Supply**
- **Generator**
- **Twenty Four Hours Uniform Security personnel**
- **Ample Parking Spaces**



# Welcome Home

Home is where love resides,  
memories are created, friends  
always belong, and laughter  
never ends.





# *The Kilimanjaro*

SEMI DETACHED DUPLEX

The Kilimanjaro is a luxury five bedroom semi detached duplex fully designed to accommodate your family's needs....

## *features*

- 5 bedrooms all en-suite
- 2 living rooms
- Maid's room
- Rooftop terrace
- Private parking space





# The Kilimanjaro





# The Kilimanjaro





# Floor Plans



**GROUND FLOOR PLAN**



# Floor Plans



- BALCONY
- BATH/WC
- BEDROOM
- MINI LOUNGE
- SHW/WC
- STAIRHALL
- STORE
- WALKIN CLOSET

**FIRST FLOOR PLAN**



# Floor Plans



- BALCONY
- MASTER BEDROOM
- PRIVATE LOUNGE
- SHW/WC
- STAIRHALL
- STORE
- STUDY
- WALKIN CLOSET

**PENT FLOOR PLAN**



# Fit for your family

Scrupulously-made. Technologically innovative. Exceptional. 3 attributes that we stand by in order to create a perfect fit for your family.







## *Designed to please*

The design of The Himalayas not only shows where we come from and where our pedigrees are, but it also shows the course of our thinking and how we see the future – as a perfect congruence of traditional values, technology and family comforts.



# Interior Views





*Interior Views*





# Interior Views





# Interior Views





# Interior Views





# Contact Us



07063126500 09096666062



Peak&HillsNigeria



Peak&HillsNigeria



Info@peakandhillsnigeria.com

## Disclaimer

All images, artists' renderings, representations and interior decorations, finishes, appliances and furnishings are provided for illustrative purposes only and have been compiled from sources deemed reliable. Though information is believed to be correct, it is presented subject to errors, omissions, changes and withdrawal without notice. This does not constitute or form any part of a contract of sale. Please contact our Sales Advisors for details.

© Peak and Hills Engineering and Development Ltd. 2020

**Peak & Hills**  
ENGINEERING • DEVELOPMENT • REAL ESTATE  
peakandhillsnigeria.com